



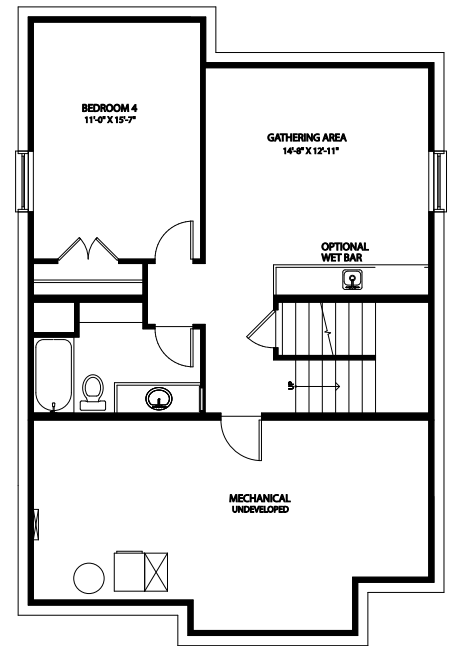
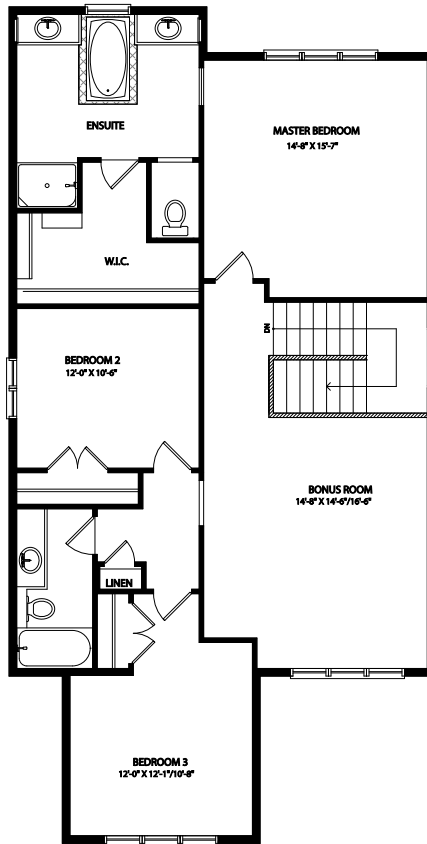
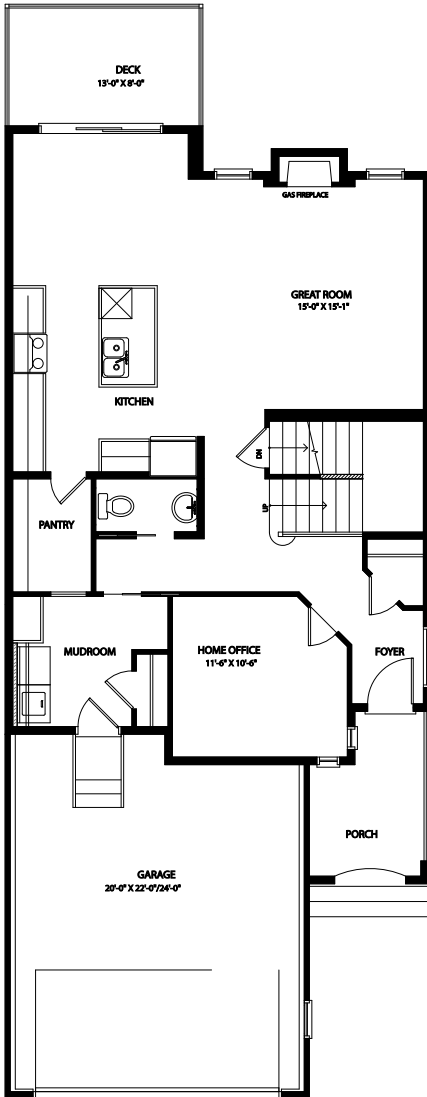
15 Sundown Way

This spacious 2230 Sq. Ft. 3 bedroom home has features for the whole family. A spa like 4 piece master bath room with a substantial walk in closet. The open concept main floor has an abundance of cupboard and counter space for any cooking enthusiastic along with an oversized pantry. The great room compliments the kitchen allowing for entertaining of guests around the build in fireplace. The upper flex room allows for more personal family enjoyment with space to spare for gaming for computer area. The two bedroom share a personal linen closet and bathroom in this masterfully planned home.

Main Floor
1,093 Sq. Ft.

Upper Floor
1,330 Sq. Ft.

Optional Lower Floor
622 Sq. Ft.



NOTES

Love Ur Home!