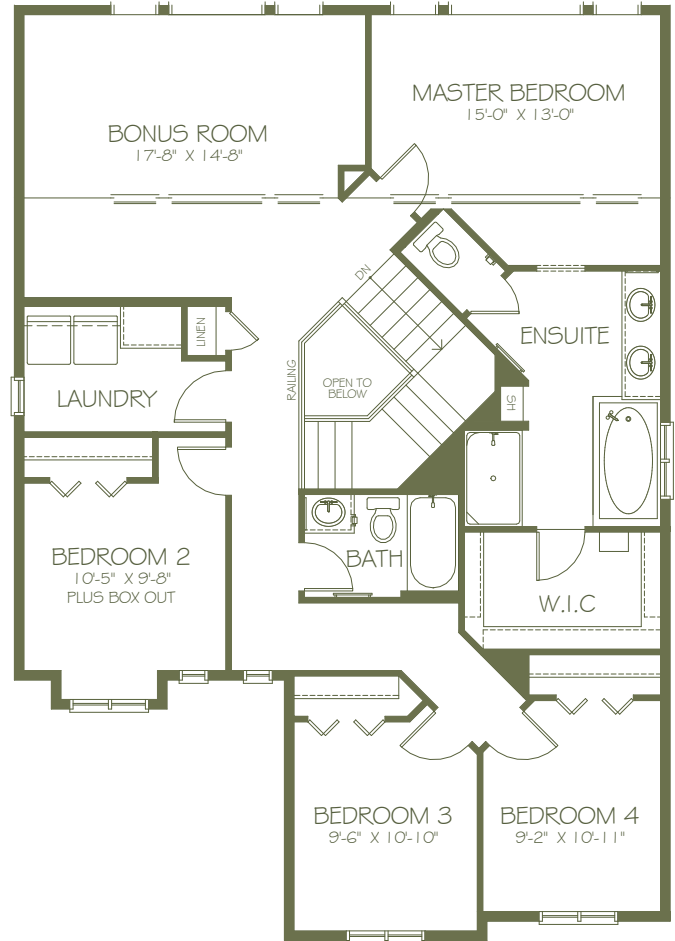
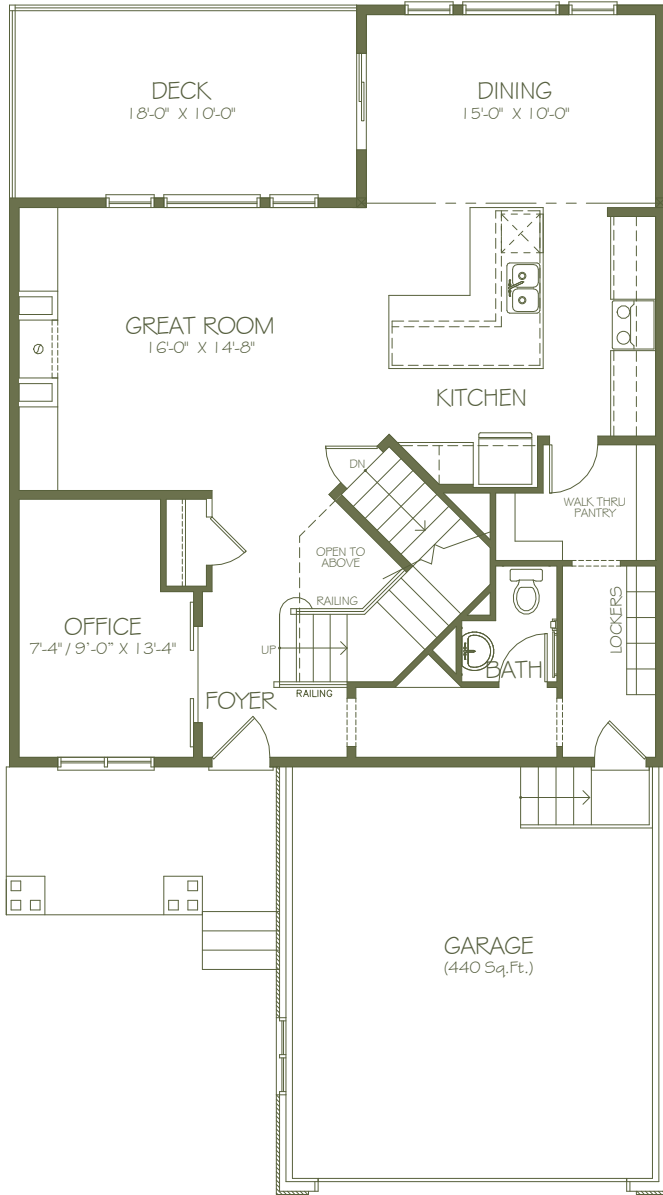




Ideal family layout features 4 bedrooms including a stylish master suite with five piece ensuite that offers separate shower, bath and walk in closet. The second level also has a rear bonus room and laundry room. Main level offers a generous kitchen with L shaped cooking island and eating bar. It is easily accessed from the garage via a walk thru pantry. A dining area off the kitchen is bathed in natural light from oversized windows. The kitchen also opens onto the great room. A private den is ideal for home office or lifestyle room.

Main Floor
1,143 Sq.Ft.

Lower Floor
1,440 Sq.Ft.



NOTES

Love Ur Home!